

User Manual

Best Ball



Best Ball

TABLE OF CONTENTS

SECTION		PAGE
1.	GETTING STARTED	1-1
1.1	Text Conventions	1-1
1.2	Terms	1-1
1.3	Controls	1-2
1.3.1	Button or Command Button.....	1-2
1.3.2	Text Box.....	1-2
1.3.3	Combo Box	1-3
1.3.4	Option Button.....	1-3
1.3.5	Check Box.....	1-3
1.3.6	Spin Control.....	1-3
1.3.7	Menu Bar	1-3
1.3.8	Frame	1-3
1.3.9	Icon	1-3
1.3.10	List Box.....	1-3
1.4	System Requirements.....	1-4
2.	INSTALLATION AND SETUP.....	2-1
2.1	Installing from Website.....	2-1
2.2	Installing from CD-ROM.....	2-1
2.3	Uninstalling Application.....	2-1
2.4	Using Application	2-2
2.4.1	Starting Application	2-2
2.4.2	Start Up	2-2
2.4.3	Command Buttons	2-2
2.4.3.1	System Manager Access	2-2
2.4.3.2	Sign Up	2-2
2.4.3.3	Remove	2-3
2.4.3.4	Cancel	2-3
3.	MENU ITEMS.....	3-1
3.1	File	3-1
3.1.1	New	3-1
3.1.2	Open.....	3-3
3.1.3	Close	3-3
3.1.4	Delete	3-3
3.1.5	Print Setup.....	3-3
3.1.6	Exit.....	3-3
3.2	Courses.....	3-4
3.3	Members... ..	3-4
3.4	Non-Members... ..	3-4
3.5	Sign Up	3-5

TABLE OF CONTENTS

SECTION		PAGE
3.5.1	Menu Items	3-5
3.5.1.1	Exit.....	3-6
3.5.1.2	Sign Up	3-6
3.5.1.3	Edit.....	3-6
3.5.1.4	Replace.....	3-8
3.5.1.5	Delete	3-8
3.5.1.6	Print.....	3-8
3.5.1.7	Done.....	3-8
3.6	Scores.....	3-9
3.6.1	Menu Items	3-9
3.6.1.1	Exit.....	3-9
3.6.1.2	Add.....	3-10
3.6.1.3	Edit.....	3-11
3.6.1.4	View	3-12
3.6.1.5	Skins.....	3-12
3.6.1.6	Print.....	3-13
3.7	Zip and UnZip.....	3-14
3.7.1	Zip Files	3-14
3.7.2	Unzip Files	3-14
3.8	Help.....	3-14
4.	COMMAND BUTTONS.....	4-1
4.1	Event	4-1
4.2	Signup Sheet	4-2
4.3	Courses.....	4-2
4.3.1	Modify Course	4-2
4.3.2	Home Course	4-4
4.3.3	Away Course.....	4-5
5.	DISCLAIMER	5-1
5.1	IT IS ILLEGAL TO MAKE UNAUTHORIZED COPIES OF THIS SOFTWARE.....	5-1
5.2	Golfsoft Software Product Warranty	5-1
5.3	Disclaimer Notice	5-1
6.	PRINT SAMPLES	6-1
6.1	Player Skins Results.....	6-1
6.2	Team Skins Results.....	6-1
6.3	Signup Sheet	6-2
6.4	Tee Times (Option 1).....	6-3
6.5	Tee Times (Option 2).....	6-4
6.6	Team Scores.....	6-5

TABLE OF CONTENTS

SECTION		PAGE
6.7	Player Scores.....	6-6
6.8	Scorecards.....	6-7

1. GETTING STARTED

Please take a moment to familiarize yourself with the text conventions, terms, and controls used in this *User Manual*.

1.1 Text Conventions

The examples below explain the specially formatted text used in this *User Manual*.

- Dialog boxes and control names appear in bold type: **Select Member** dialog
- Keyboard key names appear in bold type: **Home, End, Backspace, Tab**
- Keyboard keys that must be pressed at the same time to perform a task appear in bold type with a plus (+) between the key names: **Alt+H**
- Drives appear as capital letters: drive C
- File names appear in italics with an initial capital letter: *Setup.exe*
- Command line statements appear in lower case bold type: **a:\install**
- Names of icons appear in bold type: **My Computer** icon
- Menu items, option buttons, and check boxes appear in bold type: **Programs, Accessories, Tournament** option, **Use 18-Hole Factor** check box

1.2 Terms

You can use either a single-button mouse or a multiple-button mouse with the **Best Ball** application.

If you have a multiple-button mouse, the left mouse button is the primary mouse button, unless you have configured it differently. Any procedure that requires you to click the secondary button will refer to it as "the right mouse button."

If you have a single-button mouse, pressing the **Ctrl** key while clicking the mouse button is the same as clicking the right mouse button.

This *User Manual* uses the following terms.

Term	Meaning
<i>Best Ball</i>	Name of application.
Press	Strike a key from the keyboard.
Type	Strike a key from the keyboard to display text on the screen. Do not press the Enter key after entry is complete, unless instructed to do so.
Enter	Type the entry, then press the Enter key.
Point	Position the mouse pointer until the tip of the pointer rest on whatever you want to point to on the screen.
Click	Point, press and immediately release the left mouse button without moving the mouse.
Double-click	Point, press and immediately release the mouse button twice without moving the mouse.
Drag	Point and then hold down the mouse button as you move the mouse.
Choose	Click a command button. Click an item from a menu bar or dropdown menu.
Select	Click a command button. Click an item from a menu bar or dropdown menu. Click an option button to make a black dot appear. Click a check box to make an X appear. Click and item in a list box, then click OK , or double click

Clear

and item in a list.

Click an option button to make the black dot disappear. Click a check box to make the **X** disappear.

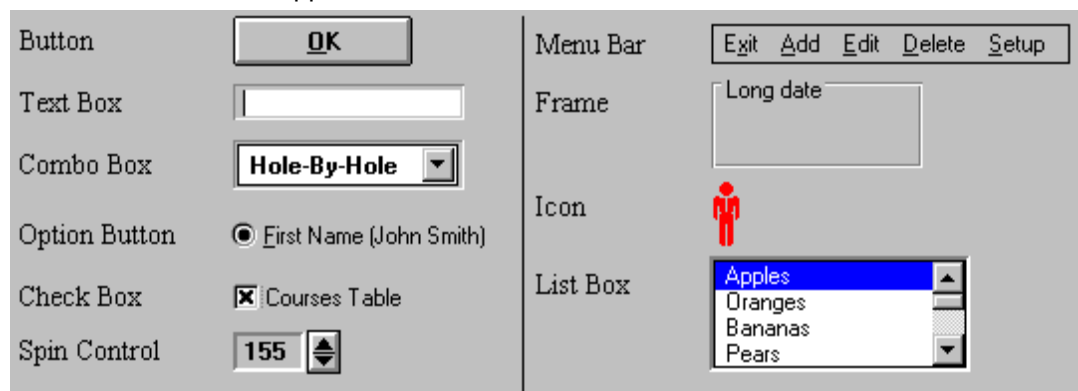
In Windows, the terms *choose* and *select* have different and specific meanings. Selecting an item usually means mark it with the selection cursor, which can appear as a highlight, a dotted rectangle, or both. You also select *check boxes* and *option buttons* in dialogs. Selecting alone does not initiate an action.

You choose an item to carry out an action. For example, choosing a command button or menu item might open a dialog or carry out a command. You often need to select an item before you can choose it.

1.3 Controls

You can use a combination of mouse and keyboard techniques. For example, you could click an item to select it, and then press **Enter** from the keyboard to choose it. When a procedure in this *User Manual* says to choose an item, generally you can use whichever method you prefer.

This section gives basic information about controls and their functions. Throughout this *Guide*, the control name will be in bold type. For example, select **OK** or select **Courses Table** check box. The controls found in the **Best Ball** application are similar as shown below.



1.3.1 Button or Command Button

You choose a *command button* to initiate an action, such as carrying out or cancelling a command. Common command buttons are **OK** and **Cancel**. They are often located along the bottom or on the right side of the dialog.

A command button, followed by an ellipsis (...) or a double greater-than sign (>>) opens another dialog box.

Unavailable command buttons are dimmed. The currently selected button has a darker border than other buttons. You can choose the currently selected button, simply by pressing the **Enter** key.

To choose a command button, click the command button. Or press the **Tab** key until the button you want is selected, and then press the **Enter** key.

1.3.2 Text Box

You type information into a *text box*. When you move to an empty text box, an *insertion point* (a flashing vertical bar) appears. The text you type starts at the insertion point.

If the box you move to already contains text, and the text is highlighted, any text you type replaces it. You can also delete the existing text by pressing the **Delete** key or **Backspace** key.

To select text in a text box, drag the pointer across the text, or double-click a word to select one word at a time. Or press and hold down the **Shift** key while pressing an **Arrow** key.

1.3.3 Combo Box

A *combo box* appears initially as a rectangular box containing the current selection. When you select the down arrow in the square box at the right, a list of available choices appears. If there are more items than can fit in the box, scroll bars are provided.

To open a combo box and select an item:

1. Click the arrow at the right to see a list of available choices.
2. Click the up or down scroll arrow, if visible or drag the scroll box to move to the item you want to select.
3. Click the item.

1.3.4 Option Button

Option buttons represent a group of mutually exclusive options. You can select only one option at a time. If you already have one option selected, your current selection replaces it. The option buttons are, generally enclosed in a frame. The selected option button contains a black dot. Names of unavailable options are dimmed.

To select an option button, click the option button.

1.3.5 Check Box

A *check box* means you can select or clear an option. You can select as many check-box options as needed. When a check box is selected, it contains an **X**. Names of unavailable options are dimmed.

To select or clear check boxes, click the check box.

1.3.6 Spin Control

The *spin control* is a control that works with another control, such as a text box to increment and decrement values. It can also, scroll back and forth through a range of values or a list of items.

To continue to increment the value, click the up (or right) arrow of the spin control and hold down the mouse button, then release the mouse button when the desired value is displayed. Likewise, repeat the latter by clicking the down (or left) arrow to decrement the value. If a flashing vertical bar appears when you drag the mouse cursor over the area left of the up (or right) and down (or left) arrows, the control contains a text box. If the area is highlighted or selected you can change the value or list with the up and down (or left and right) arrow keys from the keyboard.

1.3.7 Menu Bar

The *menu bar* contains a list of menu items. Some commands carry out an action immediately; others display a dialog so that you can select options, or a dropdown menu. Dimmed menu items are unavailable.

A menu item followed by an ellipsis (...) opens another dialog.

1.3.8 Frame

A *frame* groups the controls together. The name of the frame usually describes the group of controls.

1.3.9 Icon

Icons are small pictures that represent something. For example, the icon in the previous illustration represents a male. Some icons act as a command button.

1.3.10 List Box

A *list box* displays a list of choices. If there are more choices than can fit in the box, scroll bars are provided so you can move quickly through the list. Some list boxes are accompanied with a text box. If

you type a letter in the text box the list box scrolls to match the letter you type.

Usually, you can select only one item in a list box. There are some cases when you can select more than one item.

To select a single item from a list box:

- Use the method as described above or
- Click the scroll arrows until the item you want to select appears in the list
- Click the item, and then choose the appropriate command button or double-click the item to select it and complete the command all in one step.

To select multiple sequential items in a list, click the first item you want to select, and then drag the cursor to the last item you want to select.

To cancel the selection, click any item in the list or click the first item you want to select, press and hold down the **Shift** key, and click the last item you want to select. Both items, and all items in between, are selected.

To select multiple non-sequential items in a list, press and hold down the **Ctrl** key, and click each item you want to select.

To cancel a selection, press and hold down the **Ctrl** key, and click the item again.

1.4 System Requirements

The application will operate on the following operating systems and configurations:

- PC with a 266 MHz or greater Pentium-class processor
- Microsoft Windows 95/98/2000/ME or XP
- 256 MB of RAM or greater
- 15 MB available hard drive space
- CD drive
- Monitor supporting 800 x 600 or greater resolution with at least 256 colors

Set DPI Setting to 96 DPI.

2. INSTALLATION AND SETUP

The application must be installed to a hard disk, before it can run. Please look at the appropriate instructions below.

2.1 Installing from Website

To install application from Golfsoft Software website:

1. Logon to the Golfsoft Software website (www.golfsoftsoftware.ca).
2. Click the **Best Ball** hyperlink.
3. Click the **Download Application** hyperlink and save to your desktop.
4. When the download is complete and successful, logoff from the website.
5. Double-click the BestBallSetup icon from your desktop.
6. Delete the BestBallSetup icon from your desktop.

2.2 Installing from CD-ROM

To install application from CD-ROM:

1. Turn on your computer and start Microsoft Windows 95/98/2000/ME/XP/Vista.
2. Place the application **CD** in your CD-ROM drive.
3. If AutoPlay is enabled, the installation will begin once the drive closes, follow the on-screen instructions.

Or

If Auto Play is not enabled, you will need to manually install the application. Double-click the **My Computer** icon on your desktop, double-click the icon for your CD-ROM drive, and then double-click the icon **BestBallSetup.exe** icon. Once the installation begins follow the on-screen instructions.

2.3 Uninstalling Application

To uninstall application:

1. Turn on your computer and start Microsoft Windows 95/98/NT4/2000/ME/XP/Vista.
2. Click the **Start** button on the taskbar, point to **Settings**, and then click **Control Panel**.
3. Double-click **Add or Remove Programs**, select **Golfsoft Software Best Ball**, and then click **Add/Remove** to uninstall the application.

2.4 Using Application

Note: Handicap Creator 2011 must be installed on your computer before the application will operate properly.

2.4.1 Starting Application

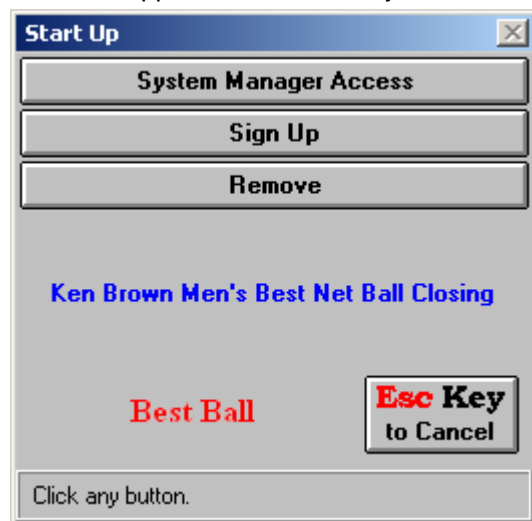
To start the application from the **Start Menu**, click the **Start** button on the task bar, point to **Programs**, then **Golfsoft Software**, and then select **Best Ball** to launch the application.

To start the **Best Ball** application from the **desktop**, double-click the **Best Ball** icon on your desktop.

To start the **Best Ball** application from the **Handicap Creator 2011** application, click the appropriate command button from the **Handicap Creator 2011** opening screen. Please see the *Handicap Creator 2011 User Manual* on how to create a **Best Ball** command button.

2.4.2 Start Up

Once the application is started, you should see a window similar as shown below.



2.4.3 Command Buttons

2.4.3.1 System Manager Access

To access the main **Best Ball** application, click the **System Manager Access** button. This action will require users to enter the System Manager password, if password protection has been enabled with the **Handicap Creator 2011** application.

2.4.3.2 Sign Up

To sign up for the event, which has been previously set up by the System Manager, click the **Sign Up** button. The response to this button will require users to enter his/her access code. After entering a valid access code, users will receive a Confirmation window. Click the **Yes** button.



2.4.3.3 Remove

To remove your name from the event, click the **Remove** button. After entering a valid access code, users will receive a Confirmation window. Click the **Yes** button.



2.4.3.4 Cancel

To exit the **Start Up** window, click the **Cancel** button.

3. MENU ITEMS

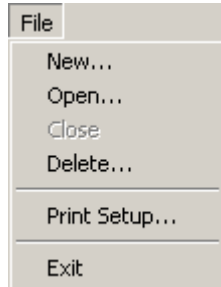
The *menu bar* contains a list of menu items. Some commands carry out an action immediately; others display a dialog so that you can select options, or a dropdown menu. Dimmed menu items are unavailable.

A menu item followed by an ellipsis (...) opens another dialog.

To access any of the menu items, click the item or press the **Alt** key from the keyboard and at the same time press the underscored letter of the menu item. Some of the menu items have dropdown menu items.

3.1 File

The File menu item offers commands to 6 dropdown menus:



3.1.1 New

To create a new event, click **File|New...** from the menu bar. This opens a **New Event** dialog, which displays the default options of the scramble event. Set or select the options as required.

Name of Event – This text box allows users to enter the name of the event. The text that you enter here should describe the event (e.g. Men's Best Ball Tournament).

Tournament – This check box sets the event as a Tournament.

Handicap – This combo box allows users to select the format of the competition: Net or Gross.

Allowance – This combo box allows users to select the percent allowance to adjust player's Handicap, if the event is a net competition.

Round Type – This combo box allows users to select the type of round: 18-Holes, Front Nine, or Back Nine.

Date – This is the date of the event. Click the **Calendar** button, to select the date.



Skins – This check box enables skins and allows users to set skins options.

Entry Fee – This command button opens the **Entry Fee** dialog. This dialog allows users to set the entry fee for members and non-members, and who to pay.

Start Time – These spin controls allow users to set the starting time of the event.

Shotgun – This check box sets the event as a shotgun start.

Interval – This spin control allows users to set the time (minutes) between tee times. The **Interval** spin control will be disabled when the **Shotgun** check box is set.

Draw – These options allow users to select the time of day of the event.

Type of Course – These options allow users to select the type of course.

Group Size – These options allow users to select the size of the groups.

Teams – This spin control allows users to set the maximum number of teams that can participate in the event.

Click **Add** button when finished.

3.1.2 Open

To open an event you have already created, click **File|Open...** from the menu bar. Select the event from the list and click **Open**.

The screenshot shows the 'golfsoft\bestball' application window. The title bar reads 'c:\golfsoft\bestball'. The menu bar includes 'File', 'Courses...', 'Members...', 'Non Members...', 'Sign Up...', 'Scores...', 'Zip', 'UnZip', and 'Help'. The main window is divided into several sections:

- Event Information:** Name of Event: **Ken Brown Men's Best Net Ball Closing**; Name of Club: **Deep River Golf Club (1972) Inc.**; Name of Course: **Deep River Golf Club**. Options: **Tournament**, **Members Only** (with a '2' in a box), **Modified**, **Skins**.
- Course Table:**

Hole Number	1	2	3	4	5	6	7	8	9	Out	10	11	12	13	14	15	16	17	18	In	Tot
Yardage	536	293	433	155	371	389	216	362	525	3280	491	354	361	185	310	423	147	421	475	3167	6447
Par	5	4	4	3	4	4	3	4	5	36	5	4	4	3	4	4	3	4	5	36	72
Handicap	1	13	5	17	9	7	15	11	3		2	8	12	16	14	10	18	4	6		
- Event Settings:** Date: **Saturday, September 13, 2008**; Teams: **13**; **Adults**, **Seniors**, **Juniors**. Gender selection: Male, Female, Mixed. Handicap: **Net**; Allowance: **80%**; Round Type: **18-Holes**. Signed Up (52): Members: **52**, Non-Members: **0**. **Use 18-Hole Factor**, **1st Place Play-Off**.
- Buttons:** **Event!**, **Signup Sheet**, **Courses**, **Flights**.

The status bar at the bottom shows 'Ready...' on the left and 'December 23, 2008 12:05 PM' on the right.

3.1.3 Close

To close the opened event and return to the main screen, click **File|Close** from the menu bar.

3.1.4 Delete

To delete an event from the database, click **File|Delete...** from the menu bar. Select the event from the list and click **Delete**.

3.1.5 Print Setup

To set the properties of default printer, click **File|Print Setup** from the menu bar.

3.1.6 Exit

To exit the application, click **File|Exit** from the menu bar.

3.2 Courses...

To execute the Courses Management application (COURSES.EXE), click **Courses...** from the menu bar. See the *Courses Management User Manual* for instructions.

3.3 Members...

To execute the Members Management application (MEMBERS.EXE), click **Members...** from the menu bar.

See the *Members Management User Manual* for instructions.

3.4 Non-Members...

To execute the Non-Members Management application (NONMEMS.EXE), click **Non-Members...** from the menu bar.

See the *Non-Members Management User Manual* for instructions.

3.5 Sign Up

To access the **Sign Up** dialog, click **Sign Up...** from the menu bar. This dialog allows users to:

- Sign up players.
- Select teams (manually or by using the wave method).
- Print signup sheets to the default printer.
- Set up tee times and print the tee times to the default printer.
- Set or edit starting tees and tee times.
- Execute random starting tee draws for shotgun starts.
- Sort by **Team** or Starting **Tee**.
- Handicap Factors can be entered manually or automatically retrieved from the database.
- Update Handicap Factors and recalculate Handicaps.
- Players can be exchanged by two clicks of the mouse.
- Starting tees can be exchanged by two clicks of the mouse.

The **Sign Up** dialog can be set in several modes: signup, edit, replace and delete mode. Each mode allows access to different functions. When the dialog first appears, the initial mode is signup.

The third box, displayed in the bottom message area, indicates the current mode. When the mode is active, the box will blink and display the text of mode selected; otherwise "No Mode" will be displayed.

Members are displayed in black font and Non-Members in red.

The screenshot shows a window titled "Sign Up" with a menu bar containing "Exit", "Sign Up", "Edit", "Replace", "Delete", "Print", and "Done". Below the menu bar is a table with 13 rows and 8 columns. The columns are: Team, Tee, Time, Handicaps, Player 1, Player 2, Player 3, and Player 4. The data in the table is as follows:

Team	Tee	Time	Handicaps	Player 1	Player 2	Player 3	Player 4
1	3B	12.30 pm	15.8 14	55	Toban Verdun	Steve Henson	George Gilks Peter Brewster
2	8B	12.30 pm	14.9 13	53	Paul Bell	John Potter	George Burton Geoff Kidson
3	9B	12.30 pm	14.9 13	52	Paul Jay	Daniel Grondin	Gerald Tallon Paul Unrau
4	1A	12.30 pm	15.2 13	52	Eric Senohrabek	Francis Mattie	Rick Rousselle Whitney Cook
5	1B	12.30 pm	14.8 13	51	Peter Harvey	Dave Hewitt	John Logie Morley Taylor
6	5B	12.30 pm	15.2 14	54	John Alessio	Mike Shea	Peter Morris Jack Gray
7	2B	12.30 pm	15.1 13	52	Martin James	Jeff Olfert	Ron Taylor Doug Connelly
8	8A	12.30 pm	15.0 13	51	Jerry Sims	Francis Boucher	Barrie Hallett Melvin Potter
9	6	12.30 pm	14.6 13	51	Paul Fehrenbach	Ed Mutterback	Mike Paquette Colin Allan
10	2A	12.30 pm	15.2 13	53	Rodney McCauley	Bob Storie	Lorne Levinski Dennis Morley
11	3A	12.30 pm	15.2 14	54	Peter Belleau	Mark MacRae	Kyle Sproule Jim Murphy
12	5A	12.30 pm	15.1 13	53	Fraser Ball	Sonny Meilleur	Ken Tait Ray Walker
13	9A	12.30 pm	15.0 14	54	Don Morrison	Dave Ethier	Don Ross Dave Morrison

At the bottom of the dialog, there is a status bar with the following elements: "Ready...", a date field showing "2009/04/25", a team count field showing "13", a mode field showing "No Mode" in red text, and "System Manager".

3.5.1 Menu Items

Exit Sign Up Edit Replace Delete Print Done

3.5.1.1 Exit

To exit the **Sign Up** dialog, click **Exit** from the menu bar.

3.5.1.2 Sign Up

While in the Sign Up mode, users can:

- Sign up players.
- Pick teams manually.

To set the dialog in **Sign Up** mode, click **Sign Up** from the menu bar.

Team	Tee	Time	Handicaps	Player 1	Player 2	Player 3	Player 4	Player 5
1 >>>>	1A	12.00 pm	0.0 0					

The yellow boxes indicate available spots.

Note: Players must be signed up starting from the top row working left to right. If players are displayed after available spots, this must be fixed before signing up new players. To do this:

1. Click **Done** from menu bar, then click **Fix** button.
2. Click Sign Up from menu bar.

To enter the player's Handicap Factor manually, check the **Ask for Handicap Factor** box; otherwise the application will extract the current Handicap Factor of the player from the member's database. Handicap Factors for Non-Members must be entered manually.

To enter a team using the display above:

1. Click the 1>>>> box.
2. Select each player from the list and click the **OK** button.
3. If the **Ask for Handicap Factor** box is checked, enter the player's Handicap Factor and click the **OK** button.

To enter a single player:

1. Click one of the yellow boxes.
2. Select player from the list and click the **OK** button.
3. If the **Ask for Handicap Factor** box is checked, enter the player's Handicap Factor and click the **OK** button.

When finished, click **Done** from the menu bar.

3.5.1.3 Edit

While in the Edit mode, users can:

- Update Handicap Factors and recalculate Handicaps.
- Modify starting tees and tee times.
- Execute random starting hole draws.

To set the dialog in **Edit** mode, click **Edit** from the menu bar.

To update Handicap Factors and recalculate Handicaps:

1. Click the **Update Handicap Factors** button.
2. To update Handicap Factors and recalculate Handicaps automatically from the member's database, click the **Yes** button; otherwise click the **No** button.
The dialog is now in **Update Handicap Factors** mode.
3. To edit a player's Handicap Factor, click the box containing the player's name and enter their Handicap Factor, and then click the **OK** button or press **Enter** from the keyboard. The application will recalculate the player's Handicap.
4. When finished updating Handicap Factors, click **Done** from the menu bar.

To set or edit starting tees:

1. Click the box in the **Tee** column and enter the starting tee and click the **OK** button or press **Enter** from the keyboard.
2. When finished setting or editing starting tees, click **Done** from the menu bar.

To set or edit tee times:

1. Click the box in the **Time** column and set the tee time and click the **OK** button or press **Enter** from the keyboard.
2. When finished setting or editing starting tees, click **Done** from the menu bar.

To execute random starting tee draws for shotgun starts:

1. When all the tee names have been entered, click the **Draw Tees** button several times.
2. When finished the random draw, click **Done** from the menu bar.

To select teams using the wave method, click **Load** button.

3.5.1.4 Replace

While in the Replace mode, users can:

- Replace players.
- Replace starting tees.

To set the dialog in **Replace** mode, click **Replace** from the menu bar.

To replace players, click one player then click the other player.

To replace starting tees, click one tee name then click the other tee name.

When finished, click **Done** from the menu bar.

3.5.1.5 Delete

While in the Delete mode, users can:

- Delete players.
- Delete teams.

To set the dialog in **Delete** mode, click **Delete** from the menu bar.

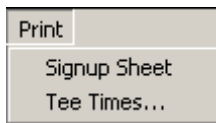
To delete a player, click the player and click the **Yes** button from the Confirmation window.

To delete a team, click the team number in the **Team** column and click the **Yes** button from the Confirmation window.

When finished, click **Done** from the menu bar.

3.5.1.6 Print

The **Print** menu item offers commands to 2 dropdown menus.



To print signup sheet to the default printer, click **Print|Signup Sheet** from the menu bar. See Section 6.3 for print sample.

To print tee times to the default printer, click **Print|Tee Times...** from the menu bar and select **Format** option and click the **OK** button.

See Sections 6.4 and 6.5 for print samples.

3.5.1.7 Done

To set the dialog in the "No Mode" state, click **Done** from the menu bar.

3.6 Scores

To access the **Scores** dialog, click **Scores...** from the menu bar.

Ken Brown Men's Best Net Ball Closing																							
Exit Add Edit View Skins Qualify Print Export																							
Hole Number	1	2	3	4	5	6	7	8	9	Out	10	11	12	13	14	15	16	17	18	In	Tot		
Yardage	536	293	433	155	371	389	216	362	525	3280	491	354	361	185	310	423	147	421	475	3167	6447	Ave	
Par	5	4	4	3	4	4	3	4	5	36	5	4	4	3	4	4	3	4	5	36	72	Hcp	
Handicap	1	13	5	17	9	7	15	11	3		2	8	12	16	14	10	18	4	6			18	
Team #3	Paul Jay				Daniel Grondin				Gerald Tallon				Paul Unrau										
Calculated	3	4	3	3	4	4	2	4	3	30	3	4	3	3	3	4	1	4	3	28	58	13	
Team #9	Paul Fehrenbach				Ed Mutterback				Mike Paquette				Colin Allan										
Entered	2	3	3	3	3	4	3	4	4	29	5	4	3	2	3	3	3	3	3	29	58	13	
Team #11	Peter Belleau				Mark MacRae				Kyle Sproule				Jim Murphy										
Entered	4	2	4	3	3	3	1	4	5	29	5	3	3	2	3	5	2	3	3	29	58	14	
Team #10	Rodney McCauley				Bob Storie				Lorne Levinski				Dennis Morley										
Entered	4	4	4	2	3	4	2	3	5	31	5	3	3	2	3	3	3	3	3	28	59	13	
Team #4	Eric Senohrabek				Francis Mattie				Rick Rousselle				Whitney Cook										
Entered	3	3	3	2	3	4	4	3	4	29	4	3	4	2	4	5	3	4	4	33	62	13	
Team #13	Don Morrison				Dave Ethier				Don Ross				Dave Morrison										
Calculated	4	4	3	2	4	4	3	4	4	32	4	3	4	2	3	4	2	4	4	30	62	14	
Team #1	Toban Verdun				Steve Henson				George Gilks				Peter Brewster										
Calculated	4	3	3	3	4	3	3	4	4	31	4	3	4	4	4	3	3	3	3	31	62	14	
Team #2	Paul Bell				John Potter				George Burton				Geoff Kidson										
Calculated	4	3	4	2	3	4	4	4	4	32	4	3	3	3	4	4	3	3	4	31	63	13	
Team #6	John Alessio				Mike Shea				Peter Morris				Jack Gray										
Calculated	5	3	4	3	3	4	3	3	5	33	5	3	3	2	5	3	2	3	4	30	63	14	
Team #5	Peter Harvey				Dave Hewitt				John Logie				Morley Taylor										
Entered	5	3	4	3	3	4	3	4	5	34	4	4	3	3	4	3	3	2	4	30	64	13	
Team #7	Martin James				Jeff Olfert				Ron Taylor				Doug Connelly										
Calculated	5	4	4	2	3	4	3	4	3	32	5	4	4	3	4	4	3	3	3	33	65	13	
Team #12	Fraser Ball				Sonny Meilleur				Ken Tait				Ray Walker										
Entered	4	3	4	3	4	5	3	4	5	35	4	3	3	3	4	3	3	4	4	31	66	13	
Skins Normal																							
Ready...										Sort By		Date		Teams		Players							
										Net Total		2008/09/13		13		52							

From the **Scores** dialog you can:

- Add and edit team scores.
- Add and edit player scores.
- Select play-off winner.
- Toggle between viewing skins only and hole-by-hole scores.
- Toggle between viewing Handicaps and Handicap Factors.
- Print skins results (team and player skins) to the default printer.
- Print scores to the default printer in sorted order.
- Export player scores to Handicap System.

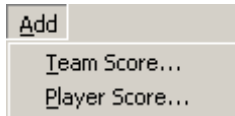
3.6.1 Menu Items

Exit	Add	Edit	View	Skins	Qualify	Print	Export
------	-----	------	------	-------	---------	-------	--------

3.6.1.1 Exit

To exit the scorecard dialog, click **Exit** from the menu bar.

3.6.1.2 Add



The **Add** menu allows you to enter team scores and player scores.

To add scores for a team:

1. Click **Add|Team Score...** from the menu bar.
2. Select team from list and click **OK**.
3. Enter hole-by-hole scores of the selected team and click **OK**.

Or

1. Click the area displaying the team number.
2. Enter hole-by-hole scores of the selected team and click **OK**.

Team #6: Eric Senohrabek, Francis Mattie, George Burton, Whitney Cook ✕

Deep River Golf Club Saturday, September 15, 2007

Hole Number	1	2	3	4	5	6	7	8	9	Out	10	11	12	13	14	15	16	17	18	In	Tot
Yardage	536	293	433	155	371	389	216	362	525	3280	491	354	361	185	310	423	147	421	475	3167	6447
Par	5	4	4	3	4	4	3	4	5	36	5	4	4	3	4	4	3	4	5	36	72
Handicap	1	13	5	17	9	7	15	11	3		2	8	12	16	14	10	18	4	6		
Score	4	3	3	3	4	3	3	4	5	32	4	4	3	2	3	5	2	3	4	30	62

Score must be > 0 and <= 15

Did Not Show
 Did Not Finish
 Disqualified

OK

Esc Key
to Cancel

Ready ...

To add scores for a player:

1. Click **Add|Player Score...** from the menu bar.
2. Select player from list and click **OK**.
3. Enter hole-by-hole scores of the selected player and click **OK**.

Or


1. Click the area displaying the player's name.
2. Enter hole-by-hole scores of the selected team and click **OK**.

Mattie, Francis

Deep River Golf Club **69.9 121** **Saturday, September 15, 2007**

Hole Number	1	2	3	4	5	6	7	8	9	Out	10	11	12	13	14	15	16	17	18	In	Tot
Yardage	536	293	433	155	371	389	216	362	525	3280	491	354	361	185	310	423	147	421	475	3167	6447
Par	5	4	4	3	4	4	3	4	5	36	5	4	4	3	4	4	3	4	5	36	72
Handicap	1	13	5	17	9	7	15	11	3		2	8	12	16	14	10	18	4	6		
Score	5	5	4	5	5	4	4			32											32
Net	4	5	3	5	4	3	4			28											28
Adjusted	5	5	4	5	5	4	4			32											32

Score must be > 0 and <= 15

Tournament Score **Did Not Show** 

Did Not Finish

Disqualified

Did Not Return Scorecard

OK **Esc Key to Cancel**

Type gross score for hole number 8.

3.6.1.3 Edit

Edit

- Team Score...
- Player Score...
- Playoff Winner...

The **Edit** menu allows users to edit team scores, player scores and playoff winner.

To edit scores for a team:

1. Click **Edit|Team Score...** from the menu bar.
2. Select team from list and click **OK**.
3. Edit hole-by-hole scores of the selected team and click **OK**.

Or

1. Click the area displaying the team number.
2. Edit hole-by-hole scores of the selected team and click **OK**.

To edit scores for a player:

1. Click **Edit|Player Score...** from the menu bar.
2. Select player from list and click **OK**.
3. Edit hole-by-hole scores of the selected player and click **OK**.

Or

1. Click the area displaying the player's name.
2. Edit hole-by-hole scores of the selected team and click **OK**.

To edit or select playoff winner:

1. Click **Edit|Playoff Winner...** from the menu bar.
2. Select playoff team winner and click **OK** or click **Cancel** to remove playoff team winner.

3.6.1.4 View



To view player scores, click **View|Player Scores** from menu bar.

To view team scores, click **View|Team Scores** from menu bar.

To view players playing skins only, click **View|Player Skins Only** from menu bar.

To view teams playing skins only, click **View|Team Skins Only** from menu bar.

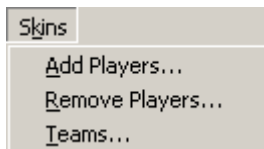
To view Handicap Factors, click **View|Handicap Factors** from menu bar.

To view Average Handicaps, click **View|Average Handicaps** from menu bar.

To view Total Handicaps, click **View|Total Handicaps** from menu bar.

To hide scores, click **View|Hide Scores** from menu bar and show scores, click **View|Show Scores**.

3.6.1.5 Skins



To add players playing skins:

1. Click **Skins|Add Players...** from the menu bar.
2. Select players playing skins from the left selection box.

To delete players playing skins:

1. Click **Skins|Remove Players...** from the menu bar.
2. Select players not playing skins from the left selection box.

To add and delete teams playing skins:

1. Click **Skins|Teams...** from the menu bar.
2. Double-click teams in **Not Playing Skins** list to add and double-click teams **Playing Skins** to delete.

3.6.1.6 Print



To print team scores, click **Print|Team Scores** from the menu bar.
See Section 6.6 for a print sample.

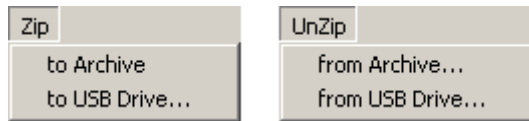
To print player scores, click **Print|Player Scores** from the menu bar.
See Section 6.7 for a print sample.

To print player skins results, click **Print|Player Skins** from the menu bar.
See Section 6.1 for a print sample.

To print team skins results, click **Print|Team Skins** from the menu bar.
See Section 6.2 for a print sample.

To print scorecards, click **Print|Scorecards** from the menu bar.
See Section 6.8 for print sample.

3.7 Zip and UnZip



3.7.1 Zip Files

To zip files to `c:\golfsoft\archive\bestball.zip`:

- Click **Zip** from the main menu and click **to Archive**.

To zip files to USB Drive:

- Insert USB Drive into USB port.
- Click **Zip** from the main menu and click **to USB Drive**.

3.7.2 Unzip Files

To extract files from `c:\golfsoft\archive\bestball.zip` to `c:\golfsoft\bestball`:

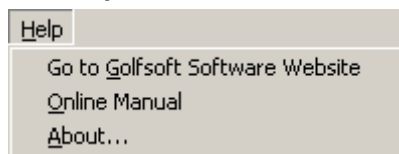
- Click **UnZip** from the main menu and click **from Archive**.

To extract files from USB Drive to `c:\golfsoft\bestball`:

- Insert USB Drive into USB port.
- Click **UnZip** from the main menu and click **from USB Drive**.

3.8 Help

The **Help** menu item offers commands to 3 dropdown menus:



To go to the Golfsoft Software website, click **Help|Go to Golfsoft Software Website** from the menu bar.

To go online and view the Best Ball User's Manual, click **Help|Online Manual** from the menu bar.

To learn more about Best Ball application, click **Help|About...** from the menu bar.

4. COMMAND BUTTONS

You choose a *command button* to initiate an action, such as carrying out or cancelling a command. Common command buttons are **OK** and **Cancel**. They are often located along the bottom or on the right side of the dialog.

A command button, followed by an ellipsis (...) or a double greater-than sign (>>) opens another dialog box.

Unavailable command buttons are dimmed. The currently selected button has a darker border than other buttons. You can choose the currently selected button, simply by pressing the **Enter** key.

To choose a command button, click the command button. Or press the **Tab** key until the button you want is selected, and then press the **Enter** key.

After starting a new event or opening an old event, the screen will display several command buttons:



Simply, click the appropriate command button.

4.1 Event

This command button opens the **Old Event** dialog, which allows users to edit changes to parameters that were set during create new event procedure (See Section 3.1.1).

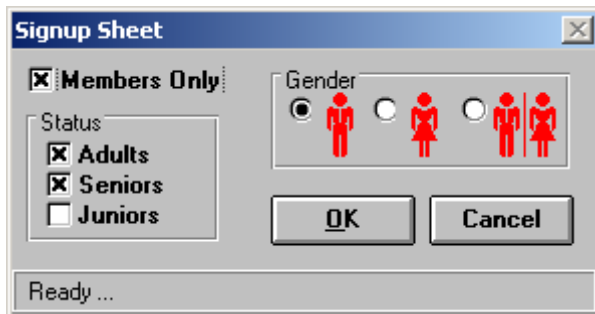
 A screenshot of a software dialog box titled "Old Event". The dialog contains several input fields and checkboxes.

- Name of Event:** Ken Brown Men's Best Net Ball Closing
- Name of Club:** Deep River Golf Club (1972) Inc.
- Date:** Saturday, September 13, 2008
- Handicap:** Net
- Allowance:** 80%
- Round Type:** 18-Holes
- Start Time:** 12:30 pm (Hour: 12, Minute: 30)
- Interval:** 10 Minutes
- Group Size:** Foursome (selected)
- Teams:** 13
- Draw:** Afternoon (selected)
- Type of Course:** 9-Hole (selected)
- Shotgun:** checked
- Tournament:** checked
- Active:** checked
- Skins:** unchecked

 At the bottom, there are buttons for "Entry Fee...", "OK", and "Cancel". A status bar at the very bottom says "Ready ...".

4.2 Signup Sheet

This command button opens the **Signup Sheet** dialog, which allows users to determine who can play in the competition.



Members Only – This check box determines if non-members can play in the competition.

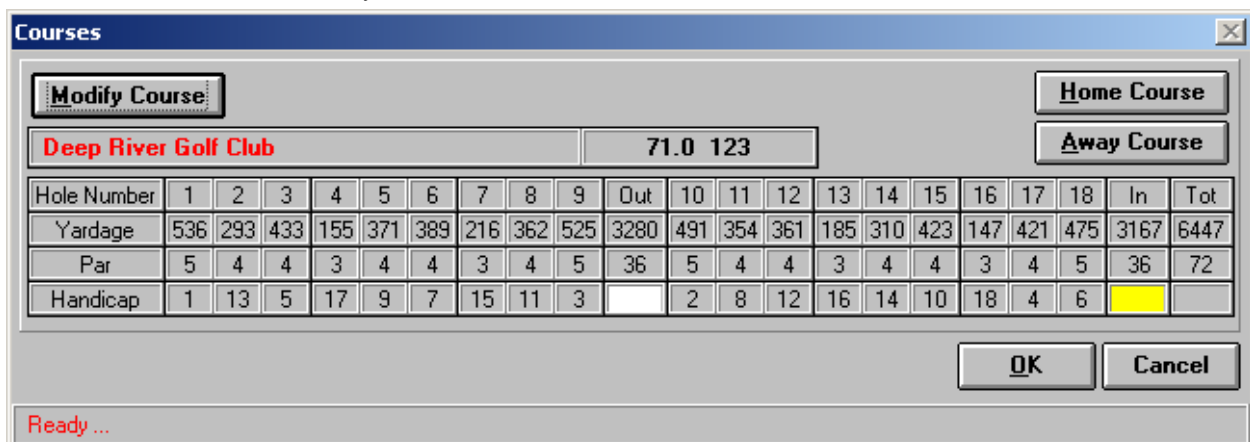
Status – Select one or multiple options.

Gender – Select one of three options.

- Click the **OK** button, to accept changes.

4.3 Courses

This command button opens the **Courses** dialog, which allows users to modify the current course information, such as: yardage, par or handicap. This dialog also allows users to select the tees of the home course or select an away course and the tees.



Home Course – Click this command button to select the tees of the home course.

Away Course – Click this command button to select an away course and the tees.

Modify Course – Click this command button to modify the details of the selected course, such as: yardage, par, and Handicap stroke holes.

4.3.1 Modify Course

This command button opens the **Modify Course** dialog, which allows users to modify the course information such as: yardage, par, and Handicap stroke holes.

Modify Course [X]

Front Nine

Hole Number	1	2	3	4	5	6	7	8	9	Total
Yardage	536	293	433	155	371	389	216	362	525	3280
Par	5	4	4	3	4	4	3	4	5	36
Handicap	1	7	3	9	5	4	8	6	2	

Back Nine

Hole Number	10	11	12	13	14	15	16	17	18	Total
Yardage	491	354	361	185	310	423	147	421	475	3167
Par	5	4	4	3	4	4	3	4	5	36
Handicap	1	4	6	8	7	5	9	2	3	

Par for hole number 1?

OK
Cancel

- Click the **OK** button, to accept changes.

4.3.2 Home Course

This command button opens the **Home Courses Selection** dialog, which allows users to select the tees of the home course.

Home Course Selection...
✕

Rating/Slope

18-Hole	Front	Back
69.9 121	35.0/121	34.9/121
65.2 106	32.6/106	32.6/106

ID#:

Name of Course: Governor:

Holes: 18 9 Province:

Courses

Hole Number	1	2	3	4	5	6	7	8	9	Out	10	11	12	13	14	15	16	17	18	In	Tot
Yardage	536	293	433	155	371	389	216	362	525	3280	491	354	361	185	310	423	147	421	475	3167	6447
Par	5	4	4	3	4	4	3	4	5	36	5	4	4	3	4	4	3	4	5	36	72
Handicap	1	13	5	17	9	7	15	11	3		2	8	12	16	14	10	18	4	6		
Yardage	491	231	361	101	312	314	147	287	456	2700	435	293	298	155	240	389	113	362	405	2690	5390
Par	5	3	4	3	4	4	3	4	5	35	5	4	4	3	4	4	3	4	4	35	70
Handicap	1	15	3	17	9	5	13	11	7		4	8	10	16	14	12	18	2	6		

1 White/Yellow

2 Red/Blue

Esc Key
to Cancel

Ready ...

To select the tees, click the appropriate button displaying the color of the tees or type the number that is displayed on the button. For example: press the **2** key from the keyboard, if you want to set the tees to Red/Blue.

4.3.3 Away Course

This command button opens the **Away Courses Selection** dialog, which allows users to select away courses and tees.

Away Course Selection...

List of Courses: **Bear Mountain Golf & Country Club**

Rating/Slope

18-Hole	Front	Back
75.1 152	37.8/149	37.3/154
72.9 147	36.8/148	36.1/148
71.0 133	36.0/130	35.0/135
68.4 129	34.2/129	34.2/129
64.8 118	32.4/118	32.4/118

ID#: **423**

Name of Course: **Bear Mountain Golf & Country Club**

Province: **BC**

Holes: 18 9

Governor: **RCGA**

Hole Number	1	2	3	4	5	6	7	8	9	Out	10	11	12	13	14	15	16	17	18	In	Tot
Yardage	549	375	395	194	493	432	173	483	556	3650	364	152	429	488	523	471	189	343	603	3562	7212
Par	5	4	4	3	4	4	3	4	5	36	4	3	4	4	5	4	3	4	5	36	72
Handicap	17	15	13	9	1	3	11	5	7		12	14	8	2	10	6	16	18	4		
Yardage	523	348	362	183	454	410	155	449	537	3421	338	135	407	453	509	432	177	311	561	3323	6744
Par	5	4	4	3	4	4	3	4	5	36	4	3	4	4	5	4	3	4	5	36	72
Handicap	17	15	13	9	1	3	11	5	7		12	14	8	2	10	6	16	18	4		
Yardage	508	325	329	150	423	397	148	431	521	3232	315	128	389	437	480	390	166	289	510	3104	6336
Par	5	4	4	3	4	4	3	4	5	36	4	3	4	4	5	4	3	4	5	36	72
Handicap	17	15	13	9	1	3	11	5	7		12	14	8	2	10	6	16	18	4		
Yardage	420	325	329	88	389	283	148	413	440	2835	315	116	389	345	464	399	158	369	493	3048	5883
Par	5	4	4	3	4	4	3	4	5	36	4	3	4	4	5	4	3	4	5	36	72
Handicap	17	15	13	9	1	3	11	5	7		12	14	8	2	10	6	16	18	4		
Yardage	533	415	384	376	414	316	155	384	188	3165	215	90	315	345	387	279	95	259	449	2434	5599
Par	5	4	4	3	4	4	3	4	5	36	4	3	4	4	5	4	3	4	5	36	72
Handicap	17	15	13	9	1	3	11	5	7		12	14	8	2	10	6	16	18	4		

Search by

Type the ID number of the away course, then press the Enter key...

List of Courses – This combo box allows users to select an away course from the COURSES database. If the ID number of the course is known, the away course may be select with the **Search by** button. Click the **Search by** button and enter the ID number in the appearing text box.

To select the tees, click the appropriate button displaying the color of the tees or type the number that is displayed on the button.

5. DISCLAIMER

5.1 IT IS ILLEGAL TO MAKE UNAUTHORIZED COPIES OF THIS SOFTWARE

This software is protected under federal copyright law. It is illegal to make or distribute copies of this software except to make a backup copy for archive purposes only. Duplication of this software for any other reason including for sale, loan, rental or gift is a federal crime. Penalties include fines as high as \$50,000 and jail terms up to five years.

5.2 Golfsoft Software Product Warranty

The enclosed software product and users manuals are copyrighted and Golfsoft Software reserves all rights. No part of this user manual or any kind of the accompanying materials may be copied, reproduced or translated in any form or medium without the prior written consent of Golfsoft Software.

Golfsoft Software warrants to the original consumer purchaser that the diskettes or CDs furnished in this product will be free from defects in materials and workmanship (as evidence by your receipt). If any diskettes or CDs supplied as part of this product prove to be defective and provided that the consumer purchaser returns the media to Golfsoft Software in accordance with the instructions in the following paragraph, Golfsoft Software will replace and defective diskettes or CDs free of charge. This warranty is valid for 30 days following the purchase of this product (dated purchase receipt should be retained as proof of purchase).

To obtain a replacement diskette or CD, please return the diskette or CD only, postage prepaid to Golfsoft Software at the address below, accompanied by a statement of the defect, a copy of your purchase receipt, your name and return address.

5.3 Disclaimer Notice

The software, diskettes, CDs and documentation are provided "as is". There is not warranty of merchantability, no warranty of fitness for a particular use and no other warranty of any kind, either expressed or implied regarding the software, diskettes, CDs or documentation, except as expressly provided in the preceding paragraph. Accordingly, users assumes the entire risk as to the use, results and performance of the software, diskettes, CDs and documentation. In no event will Golfsoft Software be liable to any person or organization for any consequential, special or indirect damages resulting from possession, use or malfunction of this product, including without limitation, damage to property and to the extent permitted by law, damages for personal injury, even if Golfsoft Software has been advised of the possibility of any such damages or loss.

Under this warranty users agrees that the liability of Golfsoft Software arising out of any kind of legal claim (whether in contract, tort or otherwise) will not exceed the manufacturers suggested retail price for the use of this product.

The terms "RCGA", "RCGA Handicap Factor", "Handicap Factor", "Factor", "RCGA Handicap Factor (N)", "RCGA Handicap System", "SLOPE", "Slope System", "Slope Rating", "Handicap Differential", "RCGA Course Rating", "RCGA Slope Rating", "Course Handicap" and "Home Course Handicap" are trademarks and service marks. With the exception of the term "RCGA", some of these trademarks and service marks are the property of the United States Golf Association, which has given the Royal Canadian Golf Association and the Canadian Ladies Golf Association permission to use the system. As owner of the term "RCGA" and a Licensee of those well-established trademarks and service marks, the RCGA has the sole right within its jurisdiction to authorize the use of those marks by others.

This software was certified by the RCGA and can only be used by golf clubs or authorized golf associations that issues and maintains RCGA Handicap Factors in full accordance with the RCGA Handicap System as described in the RCGA Handicap System manual. Golfsoft Software will not in any way be held accountable for the misuse of this software.

All elements of this software and user manuals are copyright 1999-2011, Golfsoft Software. All rights reserved. Box 841, 25 Huron Street, Deep River, Ontario K0J 1P0.

Telephone: (613) 584-4652 or Cell: (613) 639-9408.

6. PRINT SAMPLES

The print samples are not the actual size.

6.1 Player Skins Results

Player Skins Results

Mattie Hodge Best Net Ball

Saturday, June 2, 2007

- 1) Colleen James
Par on hole number 1 (Par 5)
- 2) Helene Grondin
Birdie on hole number 4 (Par 3)
- 3) Nan Morley
Par on hole number 6 (Par 4)
- 4) Nan Morley
Par on hole number 9 (Par 5)
- 5) Colleen James
Par on hole number 10 (Par 5)
- 6) Teresa Mislán
Par on hole number 11 (Par 4)
- 7) Barbara Storie
Par on hole number 13 (Par 3)
- 8) Nan Morley
Birdie on hole number 14 (Par 4)
- 9) Elinor Tait
Bogie on hole number 15 (Par 4)
- 10) Nan Morley
Birdie on hole number 18 (Par 5)

Players: 24
Skins Value: \$12.00

6.2 Team Skins Results

Team Skins Results

Ken Brown Men's Closing

Saturday, September 15, 2007

- 1) Ken Titterington, John Gale, Barrie Hallett, Peter Brewster
Eagle on hole number 9 (Par 5)

Teams: 13
Skins Value: \$260.00

6.3 Signup Sheet

Signup Sheet

Saturday, September 15, 2007

Ken Brown Men's Closing
Shotgun Start 12:30 pm

#	Name	#	Name	#	Name	#	Name
1	493 9.8 Ball, Fraser	13	7 21.7 Gray, Jack	25	108 19.9 Mislán, John	37	247 7.8 Senohrabek, Eric
2	187 18.4 Bellan, Bob	14	476 15.7 Grondin, Daniel	26	292 20.3 Morris, Peter	38	153 13.6 Shea, Mike
3	156 11.3 Boucher, Francis	15	111 15.1 Hallett, Barrie	27	218 11.7 Morrison, Don	39	38 10.2 Sims, Jerry
4	529 36.4 Brewster, Peter	16	205 7.5 Jay, Paul	28	298 21.2 Murphy, Jim	40	219 12.7 Smith, Norm
5	2 14.3 Briden, Neil	17	297 12.4 Leachman, Dave	29	35 15.3 Mutterback, Ed	41	125 6.6 Spinks, Norman
6	434 18.3 Burton, George	18	313 17.5 Lee, John	30	386 13.1 O'Ryan, Ralph	42	36 21.5 Sproule, Kyle
7	98 11.4 Chaput, Todd	19	202 18.2 Levinski, Lorne	31	209 12.5 Olfert, Jeff	43	136 11.4 Storie, Bob
8	413 22.7 Connelly, Doug	20	13 5.4 Linton, Randy	32	395 16.3 Paquette, Mike	44	268 22.3 Tait, Ken
9	12 24.7 Cook, Whitney	21	143 16.4 Logie, John	33	279 15.2 Potter, John	45	257 13.6 Tallon, Gerald
10	164 22.6 Cox, David	22	243 14.0 Mattie, Francis	34	303 25.7 Potter, Melvin	46	235 14.4 Taylor, Ron
11	363 15.0 Gale, John	23	152 23.0 McCall, Verne	35	34 20.1 Ross, Don	47	537 6.0 Titterington, Ken
12	344 13.6 Gilks, George	24	186 12.3 Meilleur, Sonny	36	407 17.2 Rousselle, Rick	48	48 25.1 Unrau, Paul

6.5 Tee Times (Option 2)

Tee Times

Saturday, September 15, 2007

Ken Brown Men's Closing Shotgun Start 12:30 pm

Team	Players	Tee	Team	Players	Tee
1	Toban Verdun Daniel Grondin Ron Taylor Fred West	9A 12:30 pm	2	Ken Titterington John Gale Barrie Hallett Peter Brewster	9B 12:30 pm
3	Randy Linton John Potter John Logie Andy Usackis	9B 12:30 pm	4	Norman Spinks Neil Briden John Lee Melvin Potter	6 12:30 pm
5	Paul Jay George Gilks Mike Paquette Paul Unrau	6 12:30 pm	6	Eric Senohrabek Francis Mattie George Burton Whitney Cook	5A 12:30 pm
7	Fraser Ball Mike Shea David Cox Bob Bellan	5A 12:30 pm	8	Jerry Sims Gerald Tallon Lorne Levinski Doug Connelly	3B 12:30 pm
9	Todd Chaput Ed Mutterback Ray Walker Verne McCall	3B 12:30 pm	10	Don Morrison Ralph O'Ryan Rick Rousselle Jack Gray	3A 12:30 pm
11	Francis Boucher Dave Leachman John Mislán Kyle Sproule	3A 12:30 pm	12	Bob Storie Jeff Olfert Don Ross Ken Tait	8A 12:30 pm
13	Sonny Meilleur Norm Smith Peter Morris Jim Murphy	8A 12:30 pm			

6.6 Team Scores

Ken Brown Men's Closing

Saturday, September 15, 2007

Yardage	536	293	433	155	371	389	216	362	525	3280	491	354	361	185	310	423	147	421	475	3167	6447	
Par	5	4	4	3	4	4	3	4	5	36	5	4	4	3	4	4	3	4	5	36	72	
Handicap	1	13	5	17	9	7	15	11	3	White	2	8	12	16	14	10	18	4	6	Yellow		
Team	1	2	3	4	5	6	7	8	9	Out	10	11	12	13	14	15	16	17	18	In	Total	Hcp
1 Bob Storie, Jeff Olfert, Don Ross, Jim Murphy	4	4	4	3	4	4	2	4	4	33	3	3	3	2	3	4	2	4	4	28	61	14
2 Eric Senohrabek, Francis Mattie, George Burton, Whitney Cook	4	3	3	3	4	3	3	4	5	32	4	4	3	2	3	5	2	3	4	30	62	14
3 Toban Verdun, Daniel Grondin, Ron Taylor, Fred West	5	3	4	3	4	4	2	4	4	33	4	4	2	3	3	4	3	3	3	29	62	15
4 Don Morrison, Ralph O'Ryan, Rick Rousselle, Jack Gray	4	3	4	2	4	4	2	3	4	30	4	4	4	3	4	3	3	4	4	33	63	13
5 Jerry Sims, Gerald Tallon, Lorne Levinski, Doug Connelly	3	3	4	2	3	4	3	4	4	30	4	4	3	3	4	4	3	4	4	33	63	14
6 Francis Boucher, Dave Leachman, John Mislán, Kyle Sproule	4	4	4	2	4	4	2	4	5	33	4	3	4	2	4	4	2	4	3	30	63	14
7 Paul Jay, George Gilks, Mike Paquette, Paul Unrau	5	3	4	3	4	4	3	3	5	34	3	3	2	3	3	5	3	4	4	30	64	14
8 Sonny Meilleur, Norm Smith, Peter Morris, Ken Tait	4	3	3	2	3	4	3	4	5	31	5	3	4	2	4	4	3	4	4	33	64	14
9 Norman Spinks, Neil Briden, John Lee, Melvin Potter	3	3	3	3	5	4	3	3	4	31	4	4	4	3	4	5	2	3	4	33	64	14
10 Todd Chaput, Ed Mutterback, Ray Walker, Verne McCall	4	3	4	2	4	3	2	4	5	31	4	3	4	3	4	5	3	3	4	33	64	15
11 Fraser Ball, Mike Shea, David Cox, Bob Bellan	4	3	4	2	5	4	3	3	5	33	5	3	3	3	3	4	3	4	4	32	65	14
12 Randy Linton, John Potter, John Logie, Andy Usackis	5	4	3	2	4	4	3	4	5	34	4	4	4	3	3	3	3	4	4	32	66	14
13 Ken Titterington, John Gale, Barrie Hallett, Peter Brewster	5	4	4	3	4	5	3	4	3	35	4	3	4	4	3	5	2	3	6	34	69	16

6.7 Player Scores

Mattie Hodge Best Net Ball

June 2, 2007

Gross Scores

	491	231	361	101	312	314	147	287	456	2700	435	293	298	155	240	389	113	362	405	2690	5390		
Yardage	5	4	4	3	4	4	3	4	5	36	5	4	4	3	4	4	3	4	5	36	72		
Par	1	13	3	17	7	9	15	11	5	Red	2	12	10	16	14	6	18	8	4	Blue			
Handicap																							
Player	1	2	3	4	5	6	7	8	9	Out	10	11	12	13	14	15	16	17	18	In	Tot	Hcp	HF
1 Nan Morley	7	5	6	4	5	4	4	5	5	45	6	5	4	4	3	7	3	6	4	42	87	10	12.8
2 Margery Taylor	6	5	6	3	6	6	6	5	8	51	7	7	6	4	4	9	4	8	6	55	106	22	25.5
3 Helene Grondin	8	5	6	2	6	6	3	6	8	50	8	7	7	6	5	8	4	6	7	58	108	22	27.1
4 Elda Cook	8	6	8	4	8	8	5	6	8	61	8	7	7	5	7	10	5	6	8	63	124	32	38.3
5 Colleen James	5	4	6	3	6	7	4	5	6	46	5	6	5	4	4	7	3	7	6	47	93	14	17.0
6 Barbara Storie	7	6	6	3	6	8	4	5	7	52	7	5	5	3	5	7	4	7	6	49	101	19	23.4
7 Linda Gauthier	8	7	6	4	7	6	4	5	7	54	7	6	6	5	4	6	4	7	6	51	105	22	26.4
8 Judith Slater	12	6	6	4	6	8	3	8	10	63	8	6	5	6	7	7	4	7	8	58	121	34	40.4
9 Elinor Tait	7	8	5	4	7	6	4	5	6	52	7	5	5	4	6	5	3	6	8	49	101	17	20.4
10 Carmel Tallon	9	6	7	5	6	6	3	5	7	54	7	6	5	4	5	9	4	7	8	55	109	21	25.2
11 Karen Murphy	7	5	5	4	5	5	5	5	7	48	8	6	6	5	7	7	4	8	6	57	105	25	29.5
12 Mary Fehrenbach	8	5	6	5	7	7	4	6	9	57	8	7	6	4	4	8	3	6	7	53	110	30	36.4
13 Mabel Chaput	7	5	6	4	6	7	3	5	6	49	6	5	5	4	5	6	3	6	6	46	95	17	19.9
14 Teresa Mislan	9	5	6	3	5	5	4	5	7	49	7	4	5	4	6	7	4	6	6	49	98	19	22.9
15 Sandy Rousselle	8	5	7	3	7	7	4	6	9	56	9	6	7	5	6	8	4	8	7	60	116	26	31.8
16 Lynn Allan	8	5	10	5	8	6	5	6	9	62	7	7	8	6	5	9	3	8	9	62	124	30	36.2
17 Dorothy Spinks	6	4	11	4	6	6	4	5	8	54	8	6	5	4	4	6	3	6	7	49	103	18	21.4
18 Anna Blair	9	5	6	3	6	7	5	6	8	55	8	7	6	5	4	9	3	7	7	56	111	19	22.9
19 Sue Morrison	8	5	6	5	7	6	4	7	7	55	7	6	5	4	5	9	5	7	7	55	110	26	31.1
20 Vaughnie Pinck	9	5	7	4	8	11	6	8	8	66	8	7	6	6	7	9	5	8	8	64	130	30	35.7
21 Maisie Kusluski	7	5	6	3	6	5	4	6	7	49	6	6	4	4	4	6	3	8	7	48	97	18	21.2
22 Rachel Code	6	6	7	4	8	6	5	6	7	55	8	6	7	4	7	8	3	7	5	55	110	18	22.5
23 Kathleen Taylor	8	6	7	4	8	9	5	7	9	63	7	8	7	4	5	7	5	8	7	58	121	25	29.9
24 Mildred Walker	6	5	7	4	6	5	6	8	7	54	8	9	6	7	5	9	3	9	8	64	118	30	36.1

